

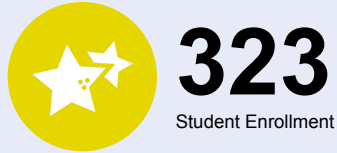


OREGON AT-A-GLANCE SCHOOL PROFILE Central Linn Elementary School

PRINCIPAL: Robyn Bailey | GRADES: K-6 | 239 W 2nd St, Halsey 97348 | 541-369-2851

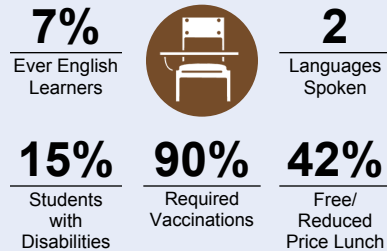


Students We Serve



DEMOGRAPHICS

Table with demographic data for American Indian/Alaska Native, Asian, Black/African American, Hispanic/Latino, Multiracial, Native Hawaiian/Pacific Islander, and White.

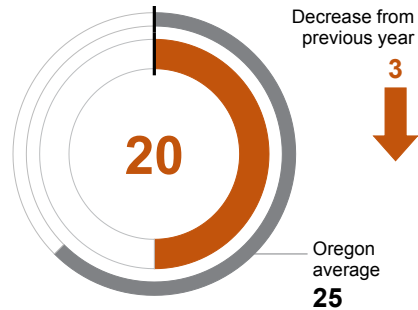


*<10 students or data unavailable

School Environment

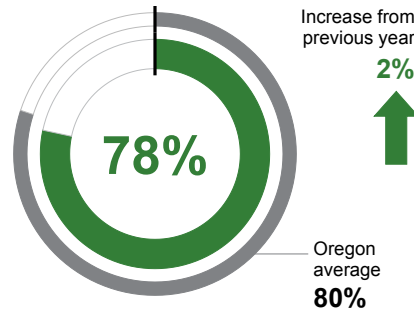
CLASS SIZE

Median class size.



REGULAR ATTENDERS

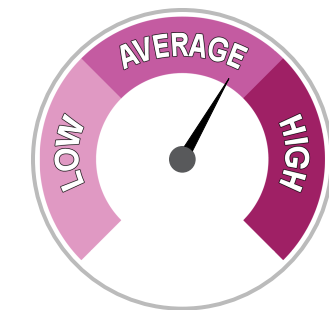
Students who attended more than 90% of their enrolled school days.



Academic Progress

INDIVIDUAL STUDENT PROGRESS

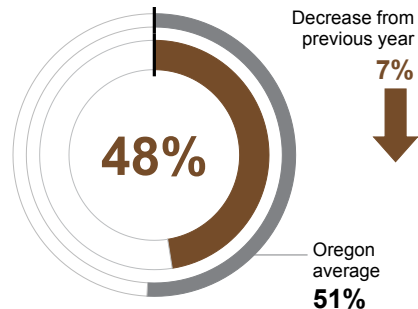
Year-to-year progress in English language arts and mathematics.



Academic Success

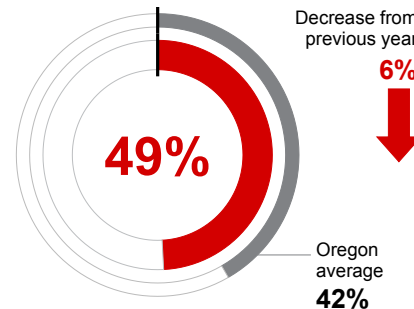
ENGLISH LANGUAGE ARTS

Students meeting state grade-level expectations.



MATHEMATICS

Students meeting state grade-level expectations.



SCIENCE

Students meeting state grade-level expectations.



School Goals

- 1. Implementation of K-6 PLCs that inform ELA instruction... 2. Implementation of K-6 PLCs that inform Math instruction... 3. Identify K-3 learners with chronic absenteeism...

State Goals

The Oregon Department of Education is partnering with school districts and local communities to ensure a 90% on-time, four year graduation rate by 2025.

Safe & Welcoming Environment

Central Linn offers a variety of supports/programs to foster a safe, welcoming and inclusive environment for all students and their families.



OREGON AT-A-GLANCE SCHOOL PROFILE CONTINUED

Central Linn Elementary School

PRINCIPAL: Robyn Bailey | GRADES: K-6 | 239 W 2nd St, Halsey 97348 | 541-369-2851



Our Staff (rounded FTE)



18

Teachers



9

Educational assistants



0

Counselors



16%

Average teacher turnover rate



65%

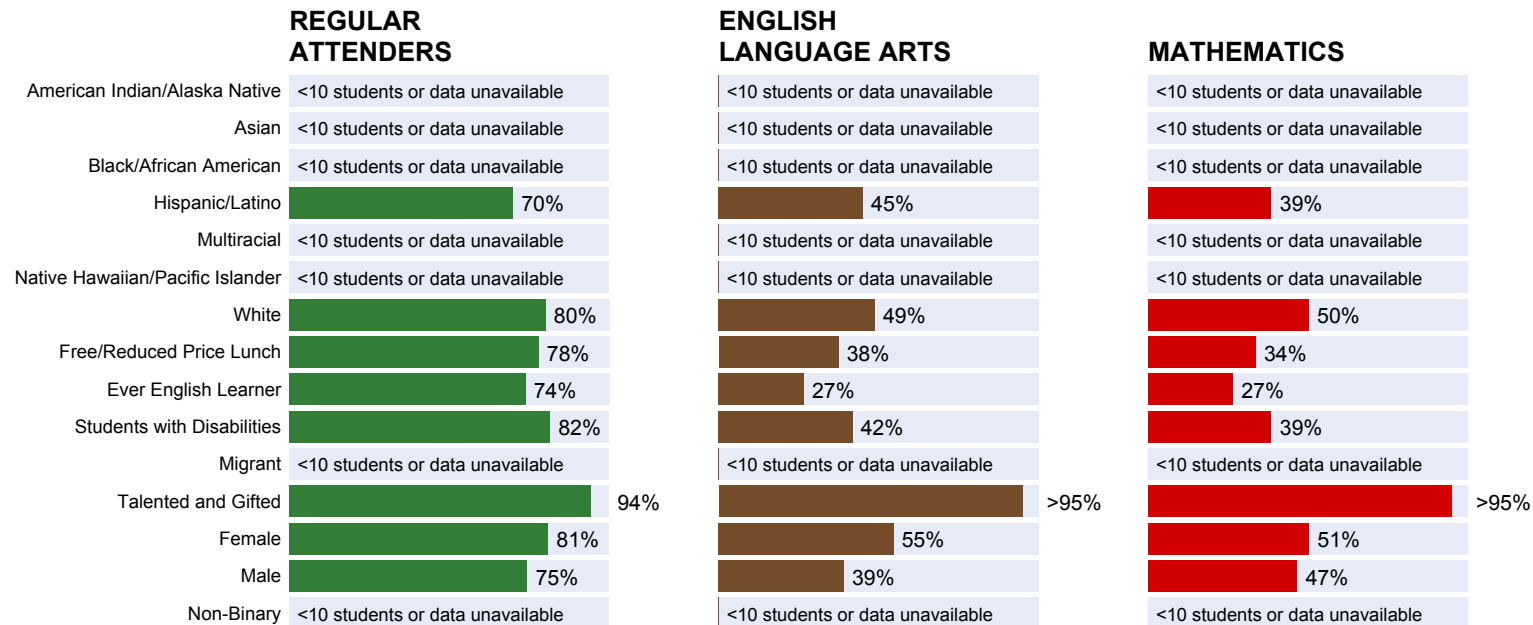
% of licensed teachers with more than 3 years of experience



No

Same principal in the last 3 years

Outcomes



About Our School

BULLYING, HARASSMENT, AND SAFETY POLICIES

We take the issue of bullying and harassment very seriously at Central Linn. When incidents arise, we do our best to investigate the concern and work with students and families to resolve issues. We strive to keep our students safe and provide an encouraging, safe environment where students are free to excel, learn, and be themselves. It is of the utmost importance to us that CL students are well protected and safe. CL has many safety policies in place to ensure our students arrive, participate in, and leave school safely.

EXTRACURRICULAR ACTIVITIES

5th/6th Grade Band
Interscholastic Sports
Outdoor School

PARENT ENGAGEMENT

Central Linn offers a wide range of opportunity for parent involvement. Our Parent Teacher Committee (PTC) meets once a month and is heavily involved in CL's fundraising and community/school outreach events. Parents are encouraged to volunteer within the school and in the classrooms. Periodic informational meetings with the principal are held to answer questions, relay information, and connect parents.

COMMUNITY ENGAGEMENT

Central Linn provides community engagement throughout each school year. Our annual Clean Up Day provides our students with the opportunity to get out in the community and beautify local areas by pulling weeds, laying bark, planting flowers, and cleaning up trash. Community members are welcomed in through various school events such as our Lit Night, STEM Night, and Veteran's Day assembly.